

WALL MOUNTED DRINKING FOUNTAIN

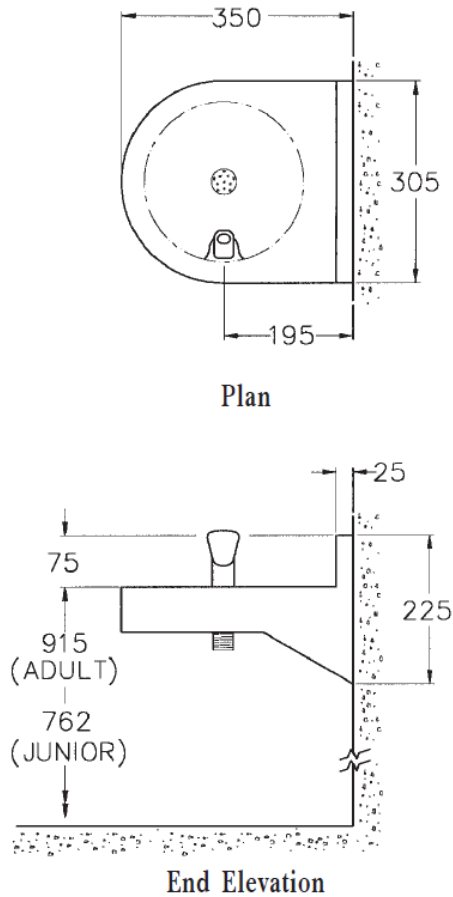
Technical Specification

PRODUCT CODE

461 WRAS

MAY 2016

Wall Mounted



Waste Outlet

The drinking fountain is supplied with a 32 mm (1 1/4 in) BSP flush grated waste fitting

Bubbler Valve

The drinking fountain is supplied with a WRAS approved chrome plated shielded bubbler with self closing push button valve. The valve is supplied with a water inlet fitting to suit 15 mm diameter pipework. If required, adjustment of the water flow through the bubbler should be done using a separate valve installed before the fountain inlet connection.

Product Code Selection for Order or Quotation

1. Base Product Code

2.

☐ 461-WRAS -wall mounted drinking fountain with bubbler valve

2. Options

☐ -WG -White Enviro-Glaze
(other colours please specify _____)

)